

CERTIFICATE OF LOCATION OF GOVERNMENT CORNER

EAST QUARTER Corner of Section 12, Township 107, Range 39, 5TH P.M.

STATE OF MINNESOTA, County of MURRAY

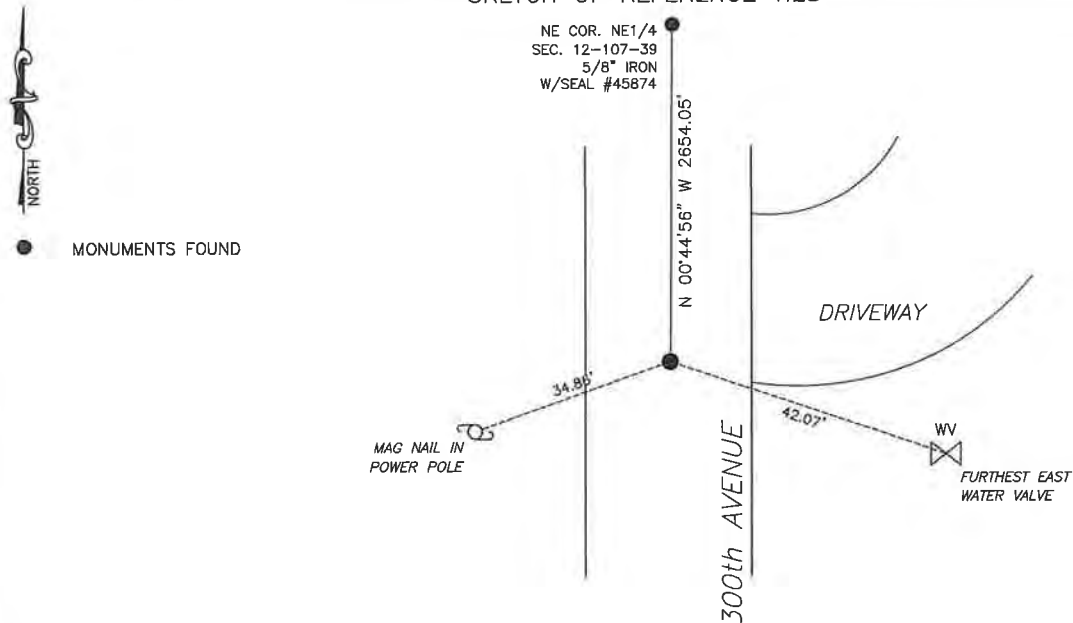
At the corner location shown on the sketch:

☒ On 4/3/2025 found a 1/2" iron with seal #12967
DATE

☒ left monument as found, ☐ lowered monument, ☐ removed monument (explain)

☐ On _____ placed a _____
DATE

SKETCH OF REFERENCE TIES



Murray County
Coordinate System NAD83 (1996)

N: 187278.793
E: 579981.049

WGS84

LAT: 44°05'13.3988"
LON: -95°27'44.2721"

Statement of evidence relative to this corner location is on back of page.

I hereby certify that this document and the data contained herein was prepared by me or under my direct supervision.



Daniel L. Bueltel
License No. 43844

6/19/2025
DATE

JUN 27 2025



MURRAY COUNTY RECORDER

Statement of Evidence

EAST QUARTER CORNER SECTION 12, T107N, R39W OF THE 5th P.M.

In July of 1861, J.W. Myers surveyed the township lines.

In September of 1861, L. Brockmann subdivided the township.

On September 9, 1980 Gary Martin, LS #12967, found a large field stone, stone is in center line of road and 29'± south of the fence line running west. He placed a $\frac{1}{2}$ " iron with seal #12967 over top of the stone.

On August 27, 2020 Westwood Professional Services found a $\frac{1}{2}$ " iron with seal #12967.

On April 3, 2025 Bueltel-Moseng Land Surveying found a $\frac{1}{2}$ " iron with seal #12967 at the corner.